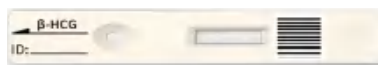




Hormones

Human Chorionic Gonadotrophin

β -HCG



Advantages

- ◆ Detection range up to 200,000 without diluting.
- ◆ Hook-effect avoided
- ◆ Complete reference interval and clear indicators for each period.

Application

Pregnancy Monitoring;
Trophoblastic Diseases;
Ectopic Pregnancy;
Abortion and Prevent Miscarriage, etc.

Xiamen Biotime Biotechnology Co., Ltd.

Address: 2F/3F/4F, No. 188, Pingcheng South Road, Haicang Street, Haicang District, Xiamen, Fujian, 361026, P. R. China
Tel: +86-592-688-3156 Fax: +86-592-6882362 E-mail: baotai@biotime.cn Web: www.biotime.cn

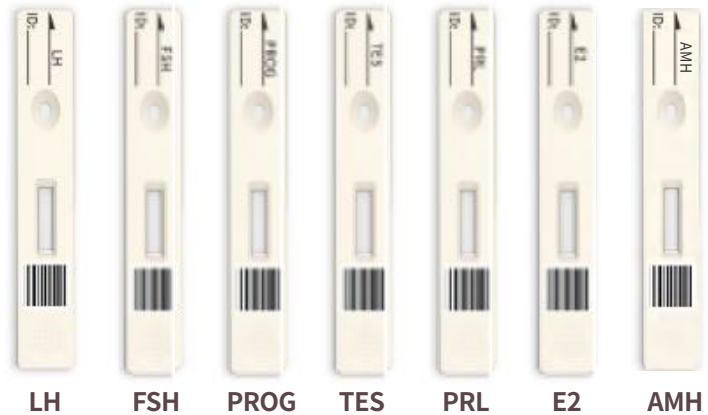


Sex Hormones

Single Panel Test Cartridge

Advantages

- ◆ Easy to use, Test results in 10-20 minutes.
- ◆ Wide detection range.
- ◆ Different specifications to meet different needs.
- ◆ Easy to delivery without cold chain requirement.
- ◆ Six kinds parameters for sex hormones.



Application

Application: Endocrine Disorders, Ovarian Cysts, Precocious Puberty, Pregnancy Monitoring, Infertility, etc.

3 in 1 Test Cartridge

Advantages

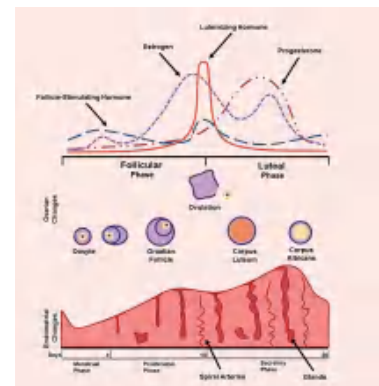
- ◆ Easy to operate, with wide detection range.
- ◆ 3 results in one test in 20 minutes.
- ◆ Easy to delivery without cold chain requirement.



FSH/LH/PRL

Testing Time

- ◆ **Menstrual Phase**(2nd to 3rd days in menstrual cycle):
Checking the ovarian condition and endocrine level.
- ◆ **Ovulation** (11st to 15th days in menstrual cycle):
Checking the growth of follicle and intima, whether to ovulate in time.
- ◆ **Luteal Phase**(22nd to 25th days in menstrual cycle):
Checking the function of luteum and ovulation.



Products Performance

| Test Item | Specimen Type | Reaction Time | Linear Range | Qualification |
|--------------------|---------------|---------------|--------------------|------------------|
| β-HCG | Serum/Plasma | 10min | 5-200000mIU/mL | NMPA CE ISO13485 |
| PROG | Serum | 10min | 0.3-80ng/mL | NMPA CE ISO13485 |
| TES | Serum | 10min | 0.2-20ng/mL | NMPA CE ISO13485 |
| FSH | Serum | 20min | 0.3-200mIU/mL | NMPA CE ISO13485 |
| LH | Serum | 20min | 1-200mIU/mL | NMPA CE ISO13485 |
| PRL | Serum | 20min | 1-4000μIU/mL | NMPA CE ISO13485 |
| E2 | Serum | 10min | 10-3000pg/mL | NMPA CE ISO13485 |
| 3 in 1(FSH/LH/PRL) | Serum | 20min | same as individual | NMPA CE ISO13485 |
| AMH | Serum/Plasma | 10min | 0.1-25ng/mL | CE ISO13485 |